

# Monitoring time variations in seismic noise amplitude at permanent seismic networks

J. Díaz<sup>1</sup>, J.A. Jara<sup>2</sup>, P. Sánchez-Pastor<sup>1</sup>, T. Frontera<sup>2</sup>, H. Seivane<sup>1</sup> and Th. Lecocq<sup>3</sup>

<sup>1</sup> Geosciences Barcelona (GEO3BCN-CSIC), Barcelona, Spain

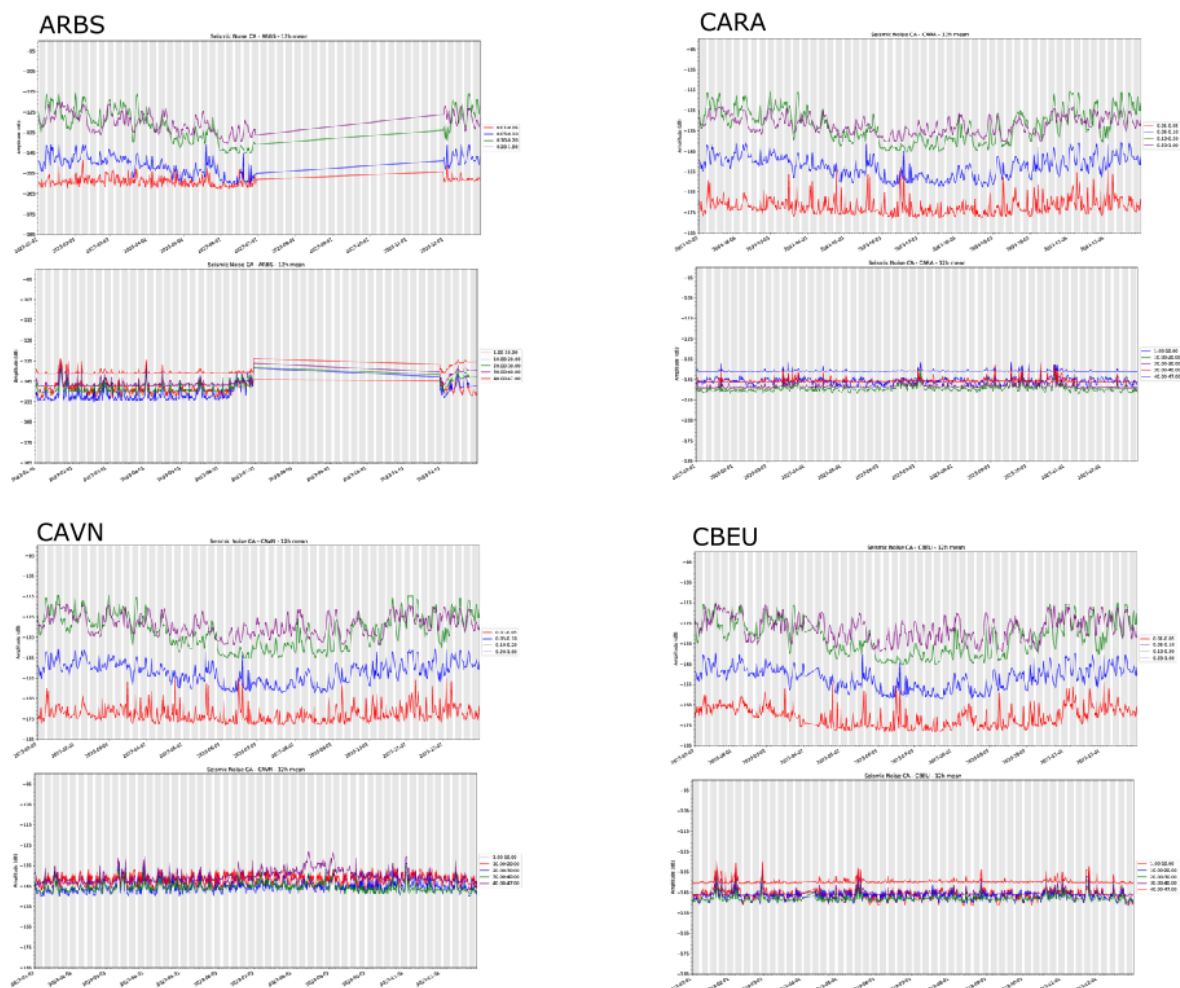
<sup>2</sup> Institut Cartogràfic i Geològic de Catalunya, Barcelona, Spain

<sup>3</sup> Seismology-Gravimetry, Royal Observatory of Belgium, Brussels, Belgium.

## Supplementary Material

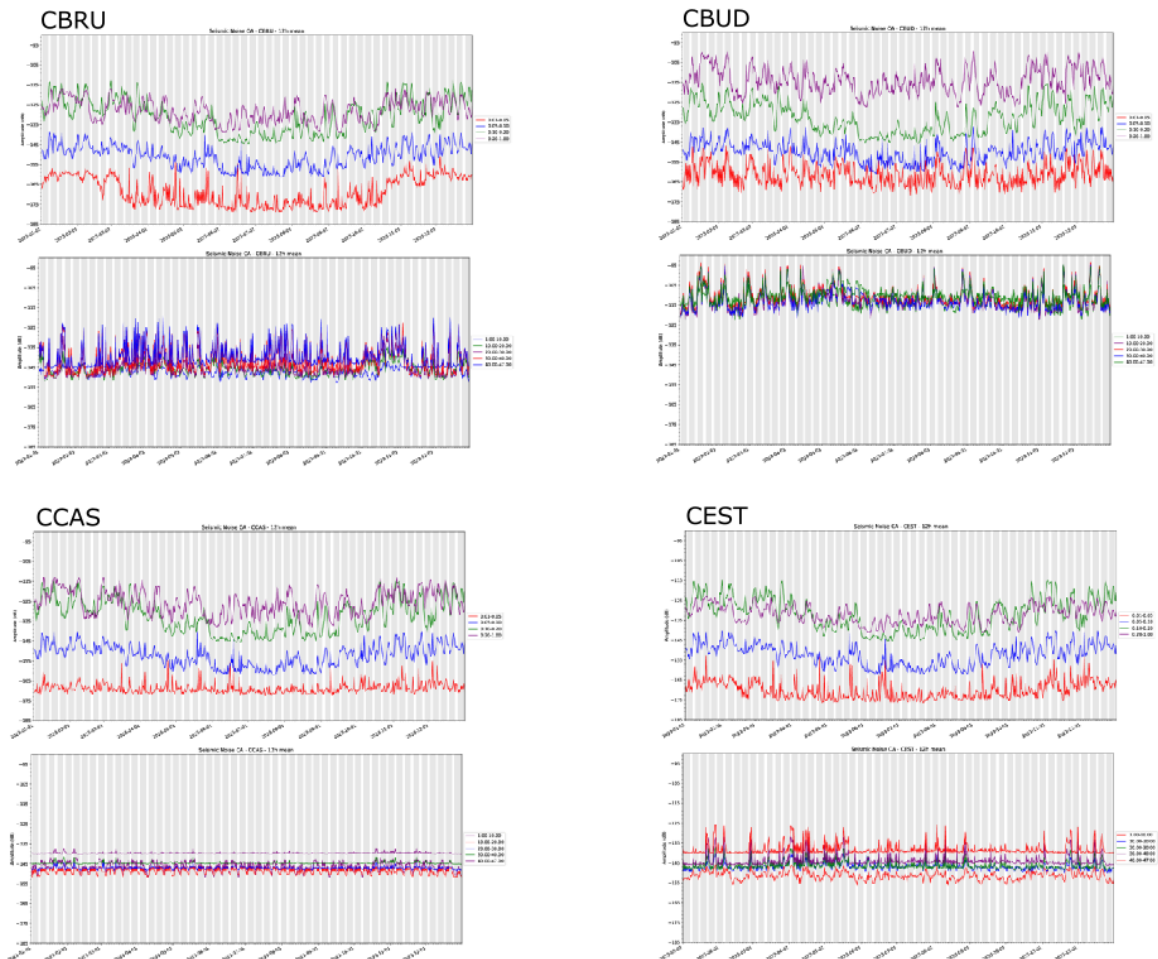
### Supplemental Figure 1

Mean amplitude values for stations ARBS, CARA, CAVN, CBREU, at each analyzed frequency band. Upper panel: Frequency bands below 1 Hz. Lower panel: Frequency bands above 1 Hz. Mean values calculated in 12 hours intervals.



## Supplemental Figure 2

Mean amplitude values for stations CBRU, CBUD, CCAS, CEST, at each analyzed frequency band. Upper panel: Frequency bands below 1 Hz. Lower panel: Frequency bands above 1 Hz. Mean values calculated in 12 hours intervals.

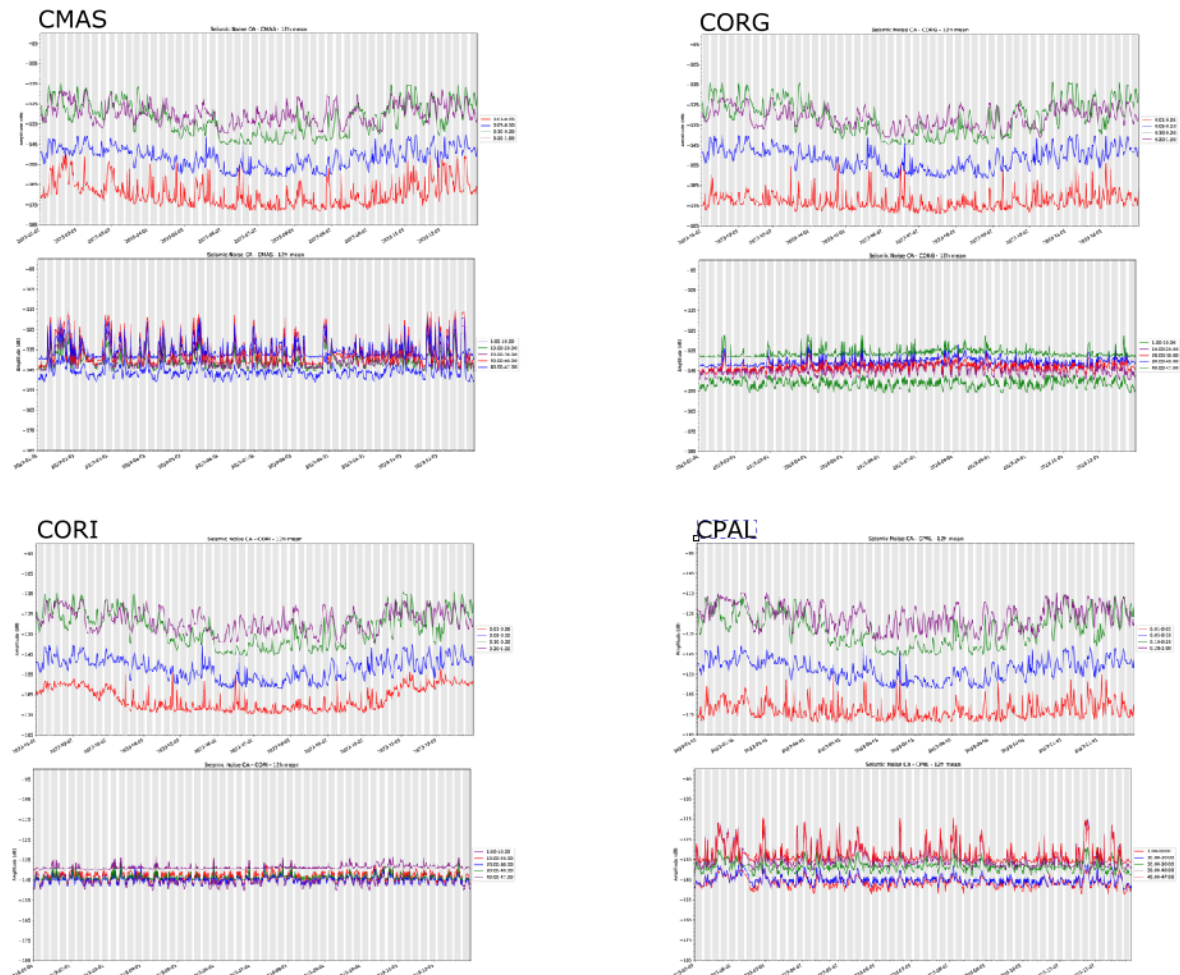


Mean amplitude values for stations CFAR, CFON, CGAR, CLLI at each analyzed frequency band. Upper panel: Frequency bands below 1 Hz. Lower panel: Frequency bands above 1 Hz. Mean values calculated in 12 hours intervals.



### Supplemental Figure 4

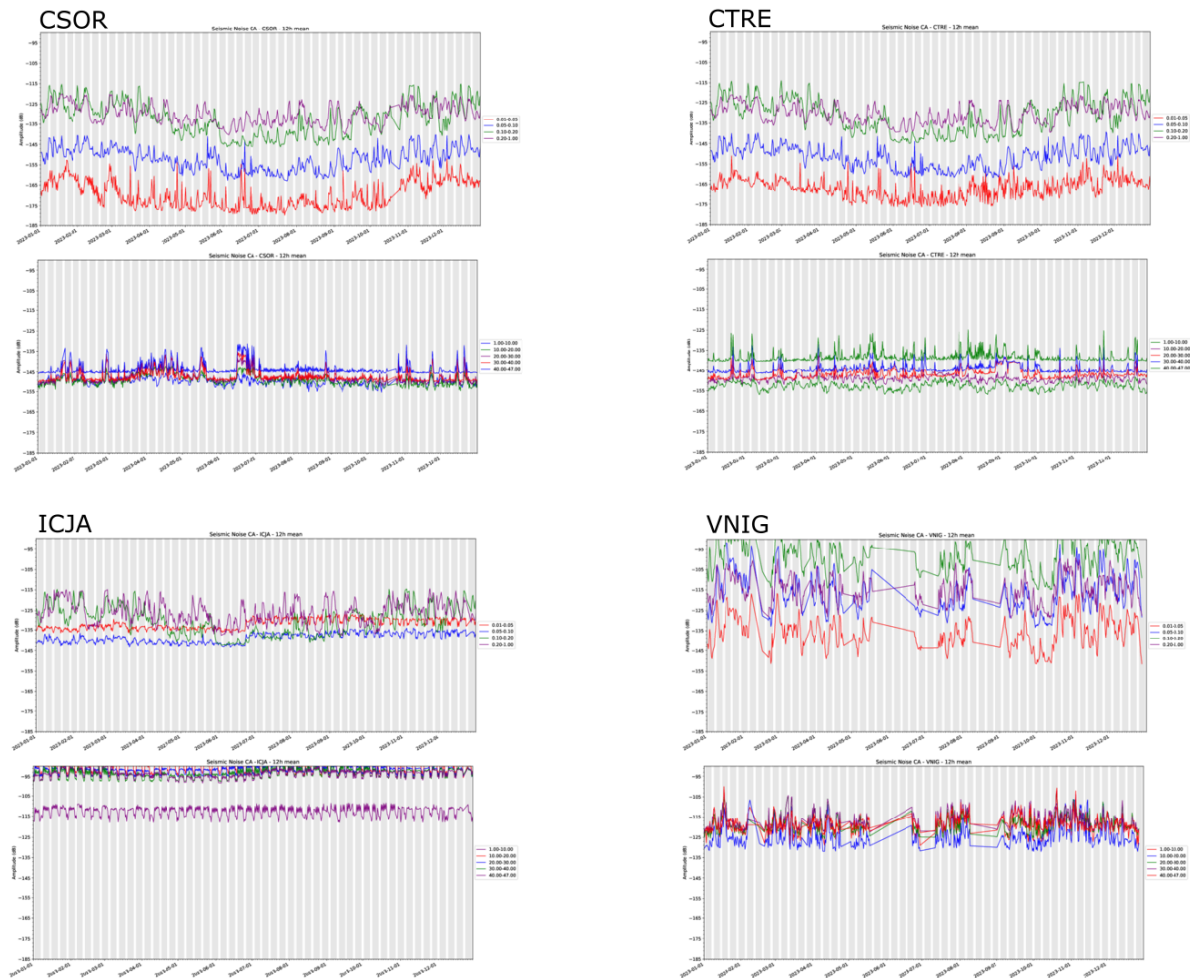
Mean amplitude values for stations CMAS, CORG, CORI, CPAL at each analyzed frequency band. Upper panel: Frequency bands below 1 Hz. Lower panel: Frequency bands above 1 Hz. Mean values calculated in 12 hours intervals.





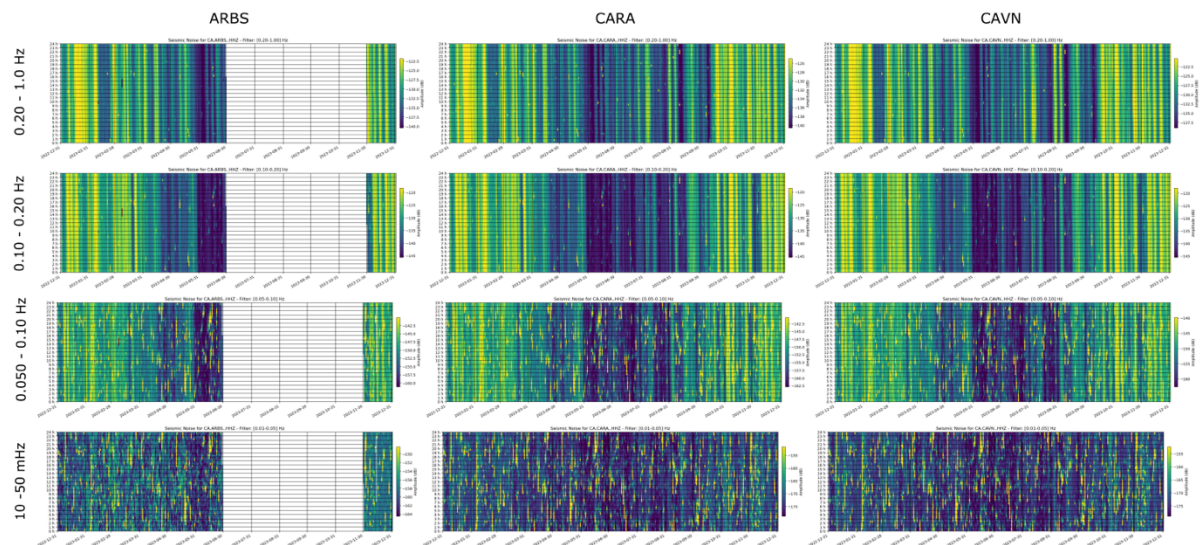
### Supplemental Figure 5

Mean amplitude values for stations CSOR, CTRE, ICJA, VNIG at each analyzed frequency band. Upper panel: Frequency bands below 1 Hz. Lower panel: Frequency bands above 1 Hz. Mean values calculated in 12 hours intervals.



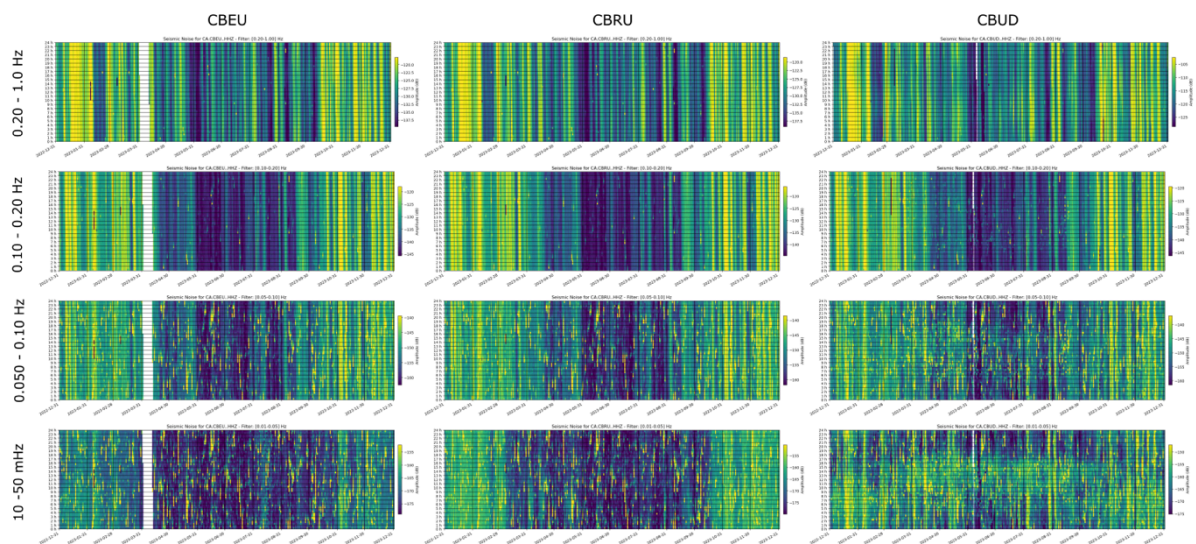
### Supplemental Figure 6

Power amplitude variations at low frequency bands as a function of the date and the time of the day for stations ARBS, CARA and CAVN



### Supplemental Figure 7

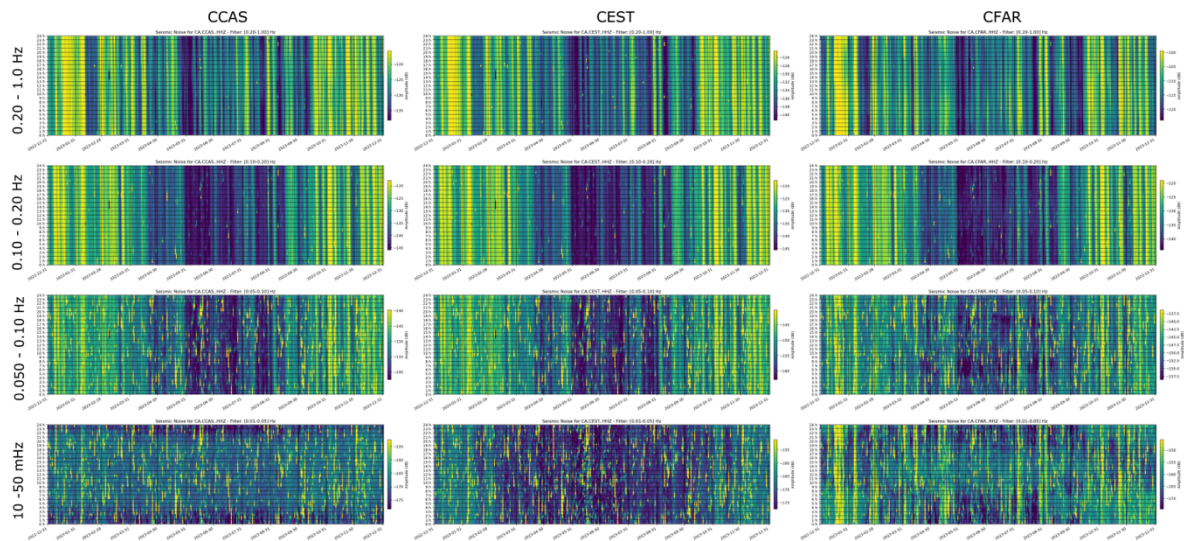
Power amplitude variations at low frequency bands as a function of the date and the time of the day for stations CBEU, CBRU and CBUD





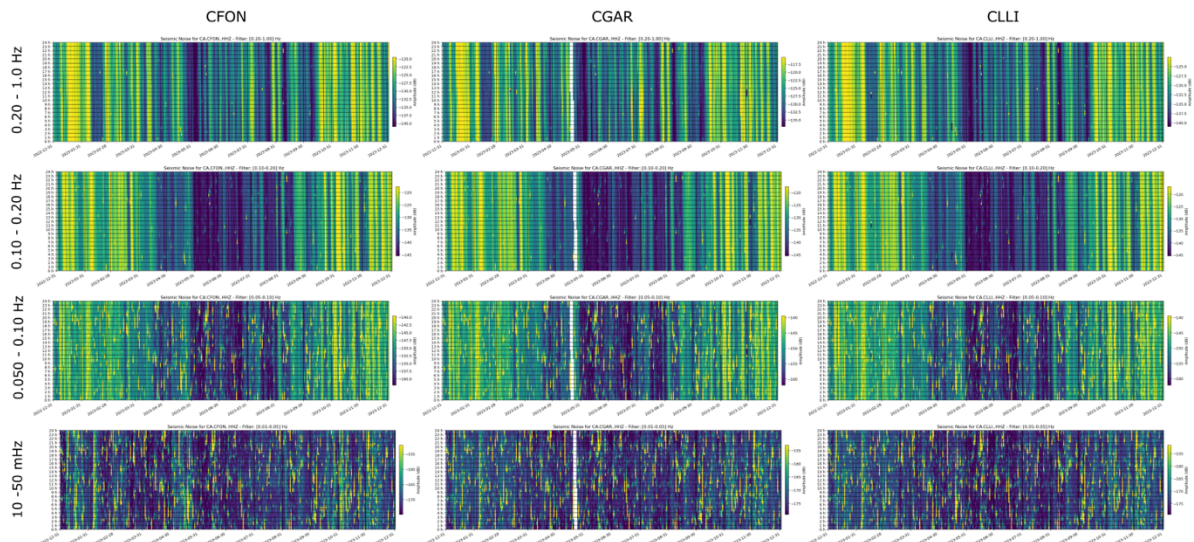
### Supplemental Figure 8

Power amplitude variations at low frequency bands as a function of the date and the time of the day for stations CCAS, CEST and CFAR



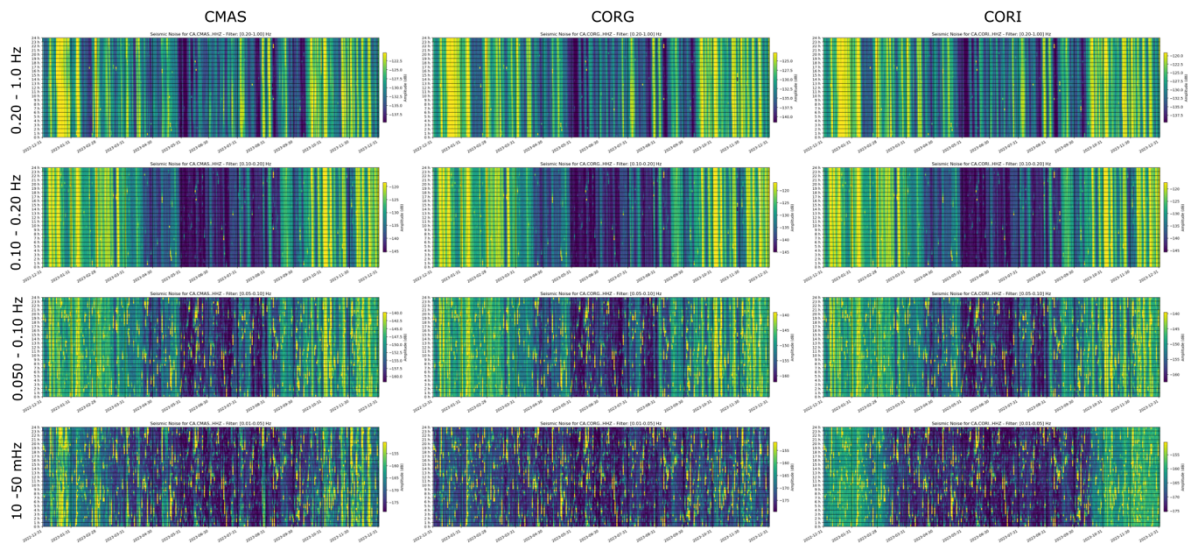
### Supplemental Figure 9

Power amplitude variations at low frequency bands as a function of the date and the time of the day for stations CFON, CGAR and CLLI



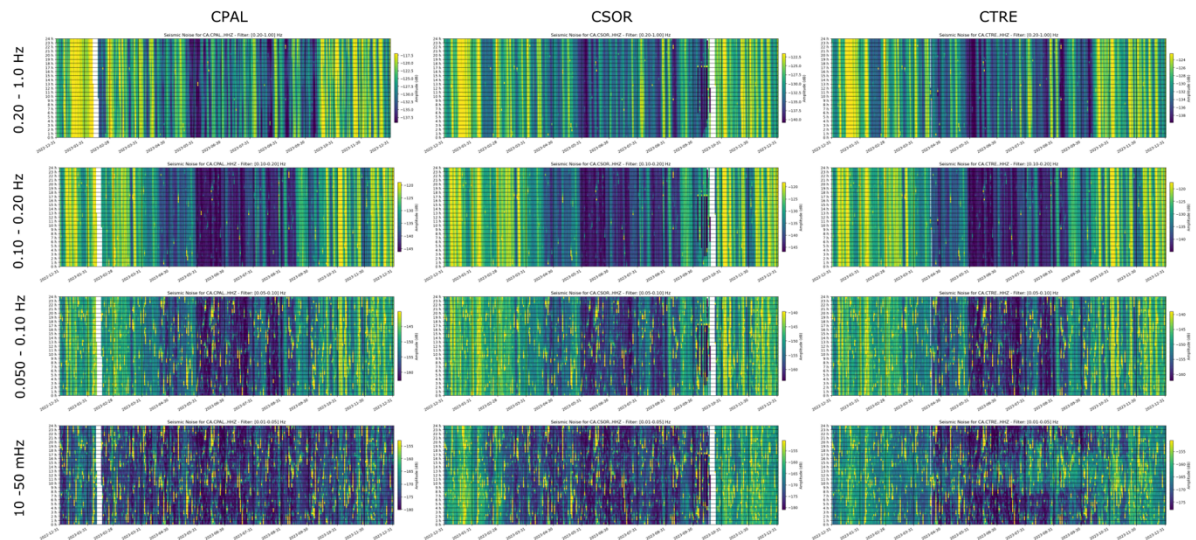
### Supplemental Figure 10

Power amplitude variations at low frequency bands as a function of the date and the time of the day for stations CMAS, CORG and CORI



### Supplemental Figure 11

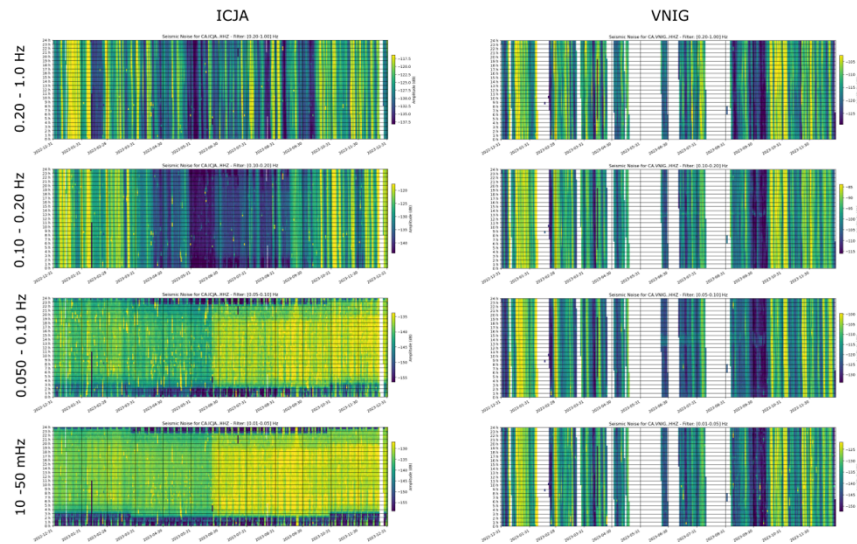
Power amplitude variations at low frequency bands as a function of the date and the time of the day for stations CPAL, CSOR and CTRE





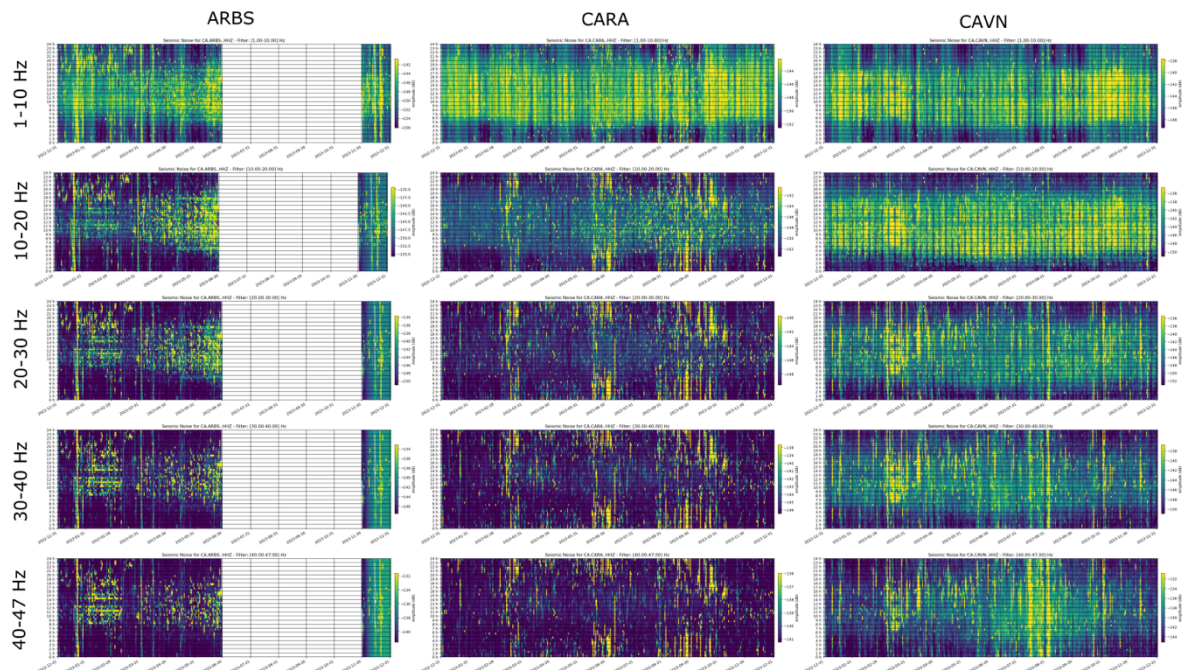
### Supplemental Figure 12

Power amplitude variations at low frequency bands as a function of the date and the time of the day for stations ICJA and VNIG



### Supplemental Figure 13

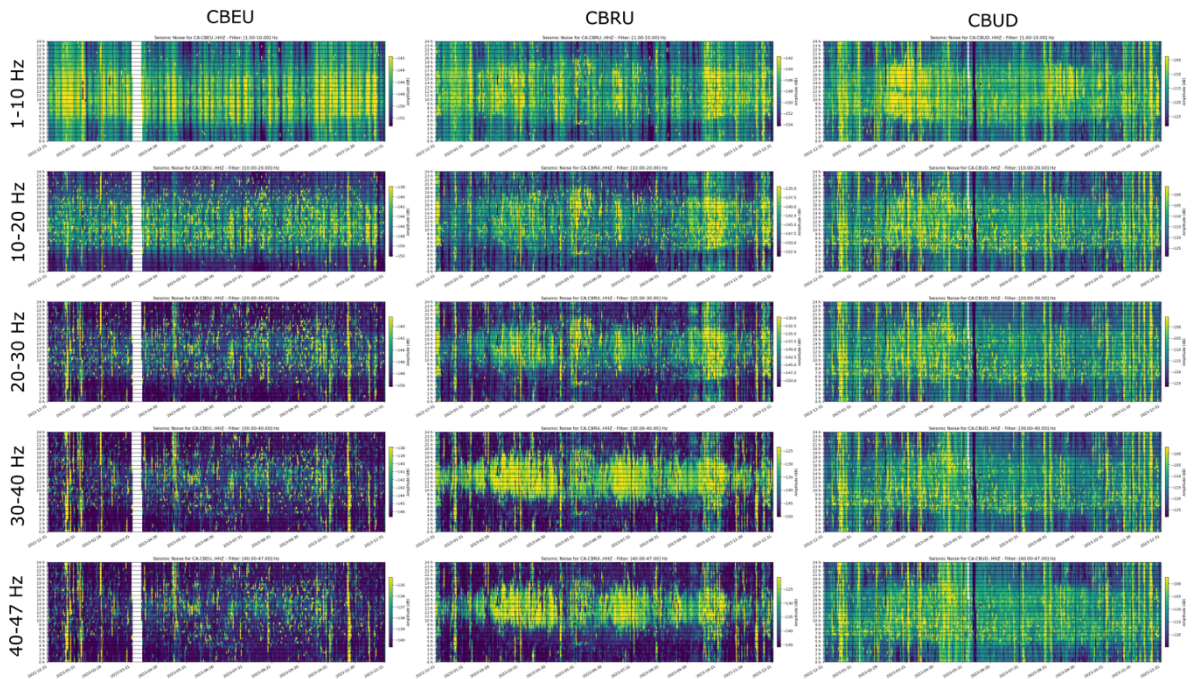
Power amplitude variations at high frequency bands as a function of the date and the time of the day for stations ARBS, CARA and CAVN





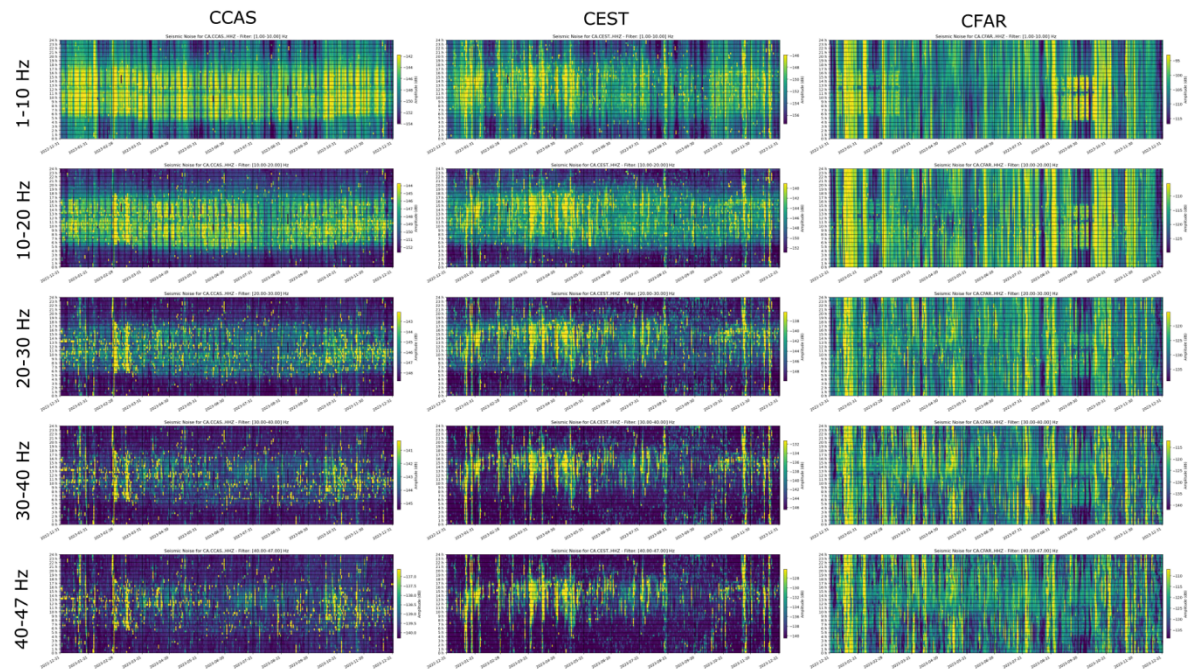
### Supplemental Figure 14

Power amplitude variations at high frequency bands as a function of the date and the time of the day for stations CBEU, CBRU and CBUD



### Supplemental Figure 15

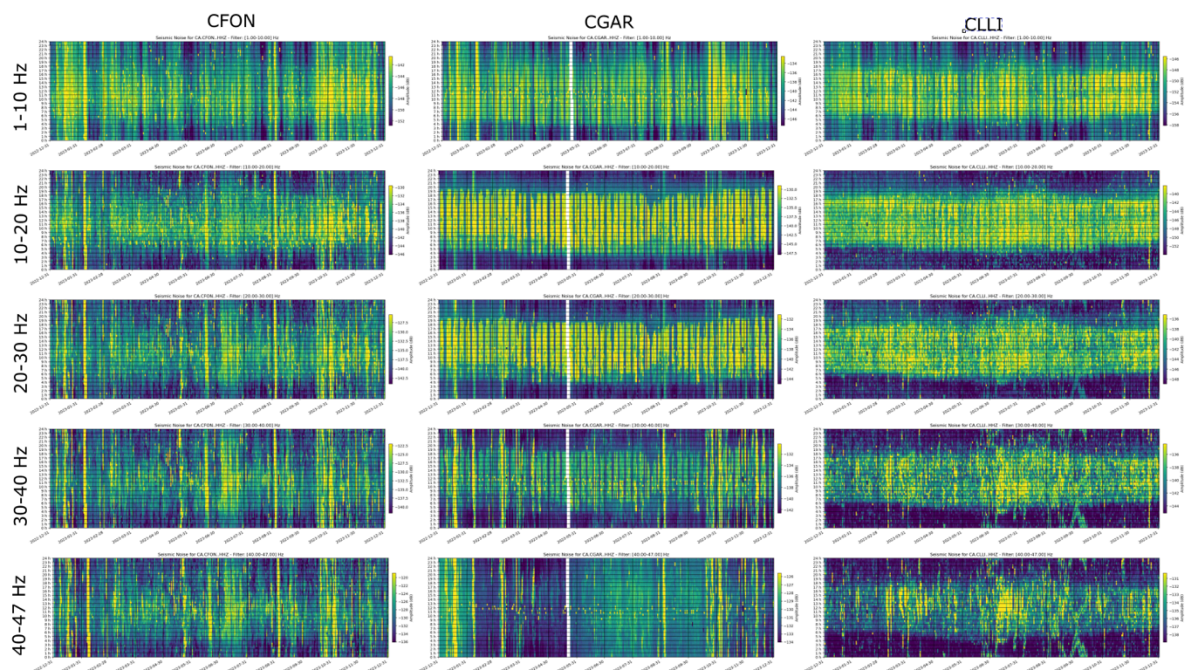
Power amplitude variations at high frequency bands as a function of the date and the time of the day for stations CCAS, CEST and CFAR





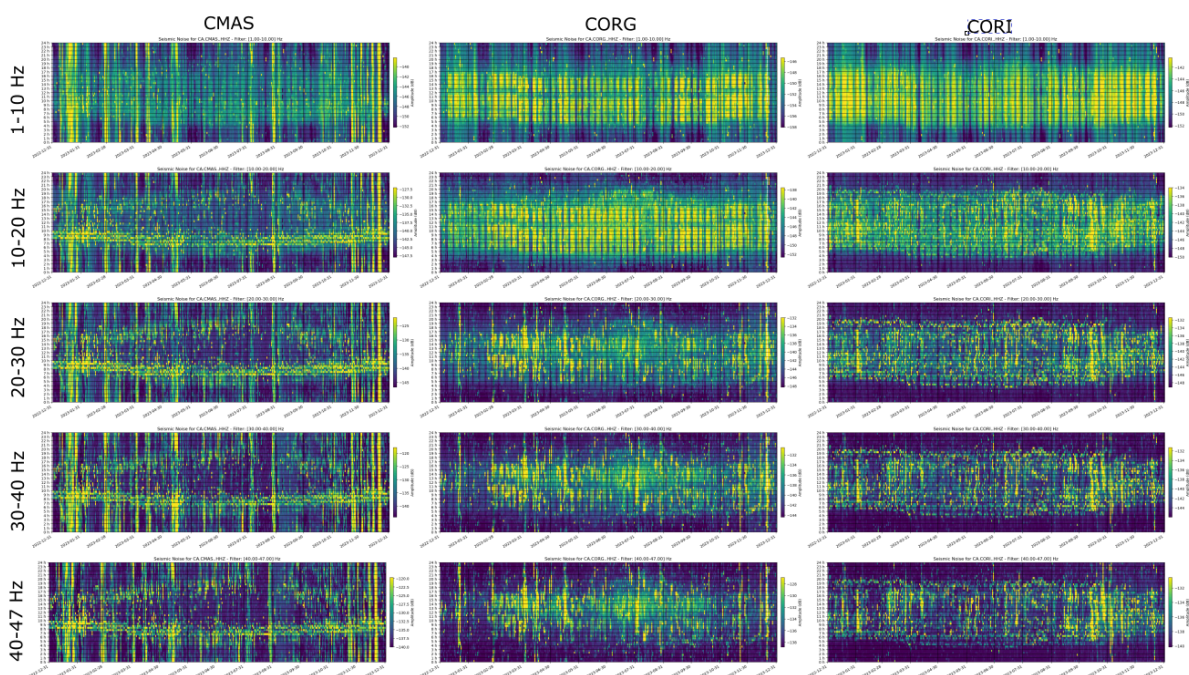
### Supplemental Figure 16

Power amplitude variations at high frequency bands as a function of the date and the time of the day for stations CFON, CGAR and CLLI



### Supplemental Figure 17

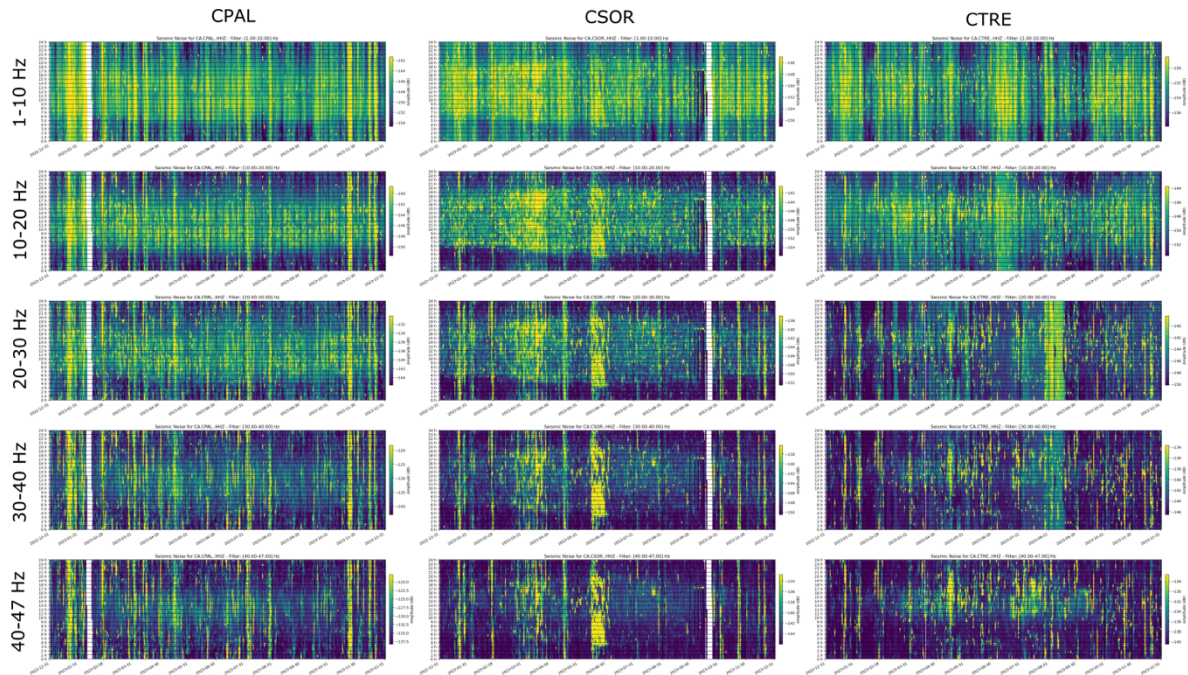
Power amplitude variations at high frequency bands as a function of the date and the time of the day for stations CMAS, CORG and CORI





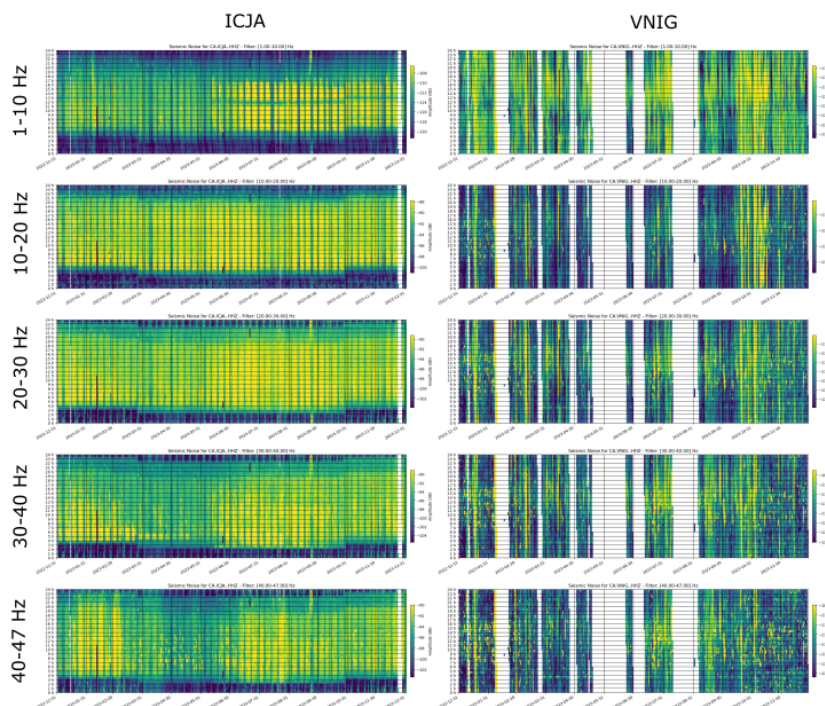
### Supplemental Figure 18

Power amplitude variations at high frequency bands as a function of the date and the time of the day for stations CPAL, CSOR and CTRE



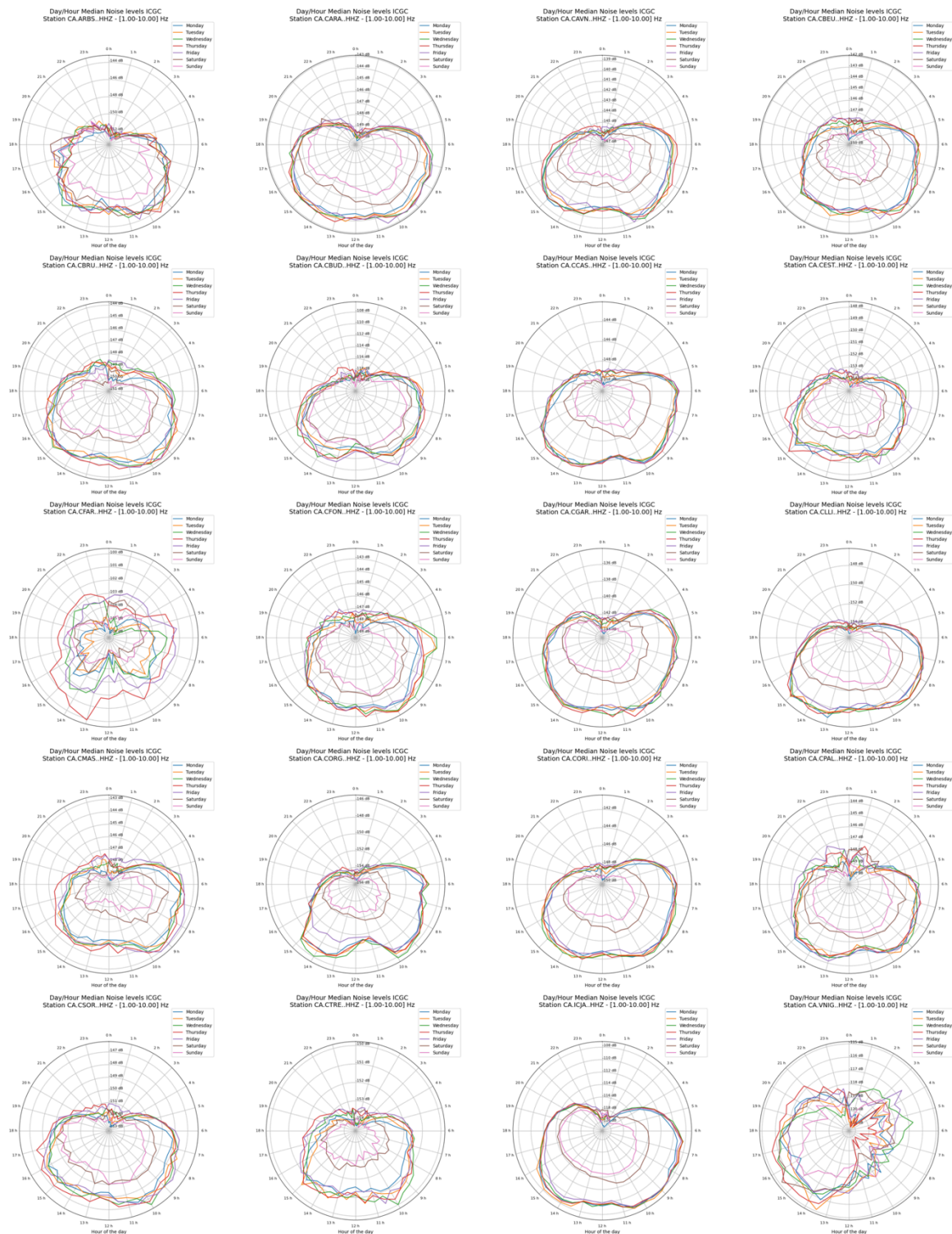
### Supplemental Figure 19

Power amplitude variations at high frequency bands as a function of the date and the time of the day for stations ICJA and VNIG



## Supplemental Figure 20

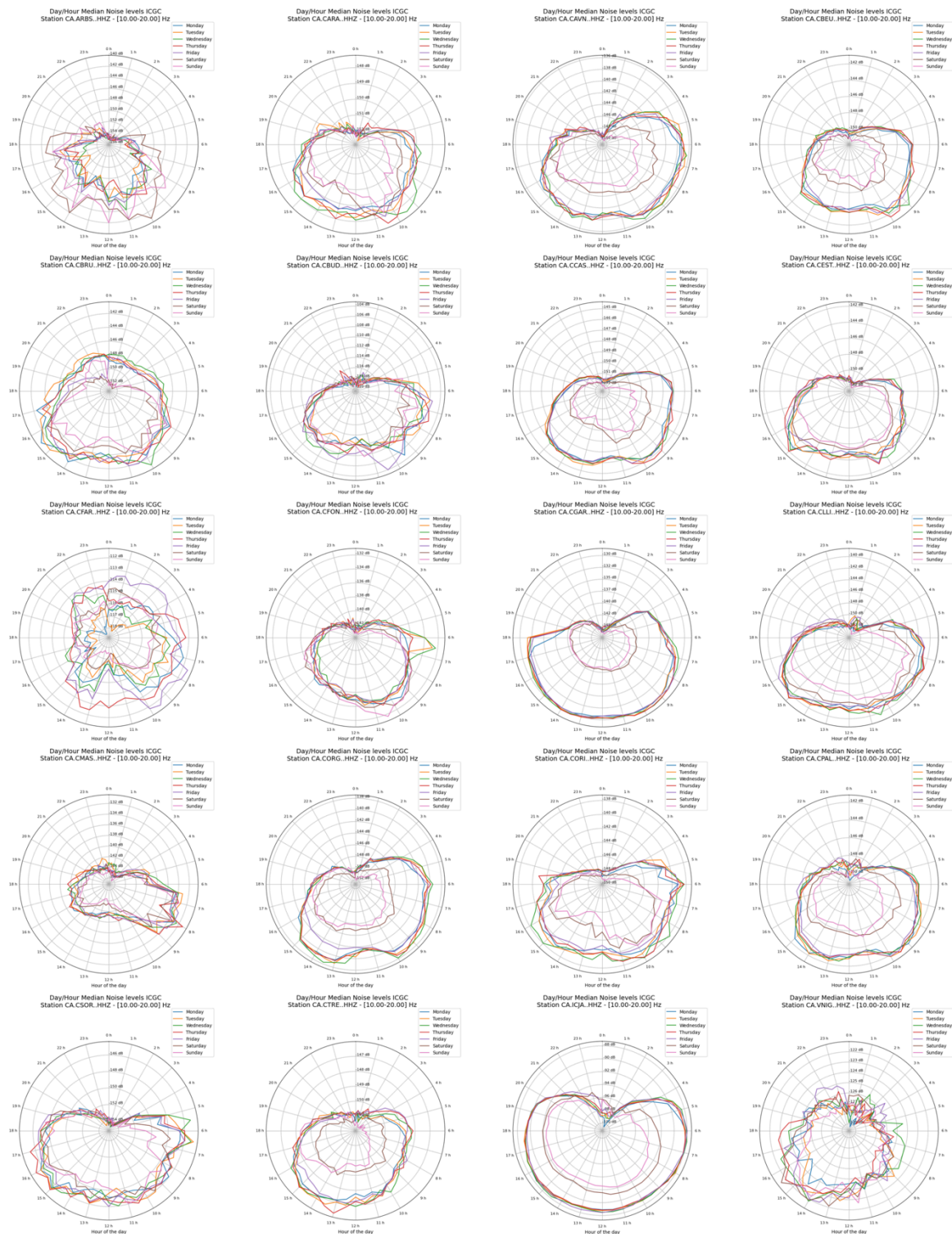
Power amplitude for the 1-10 Hz frequency band, represented as a function of the hour of the day and the day of the week. Each line, represented with different colors, shows the mean values for the days of the week (Monday-Sunday)





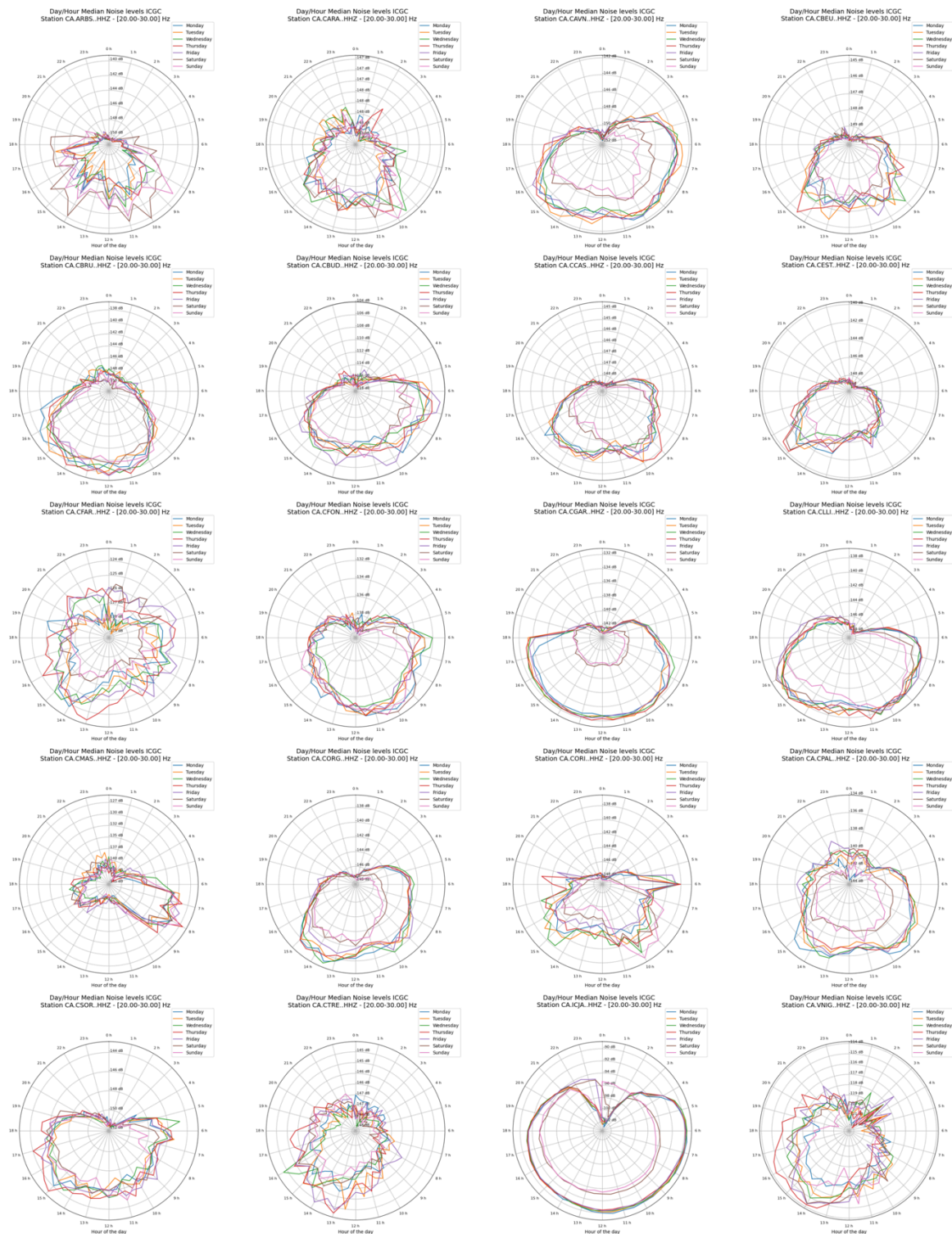
## Supplemental Figure 21

Power amplitude for the 10-20 Hz frequency band, represented as a function of the hour of the day and the day of the week. Each line, represented with different colors, shows the mean values for the days of the week (Monday-Sunday)



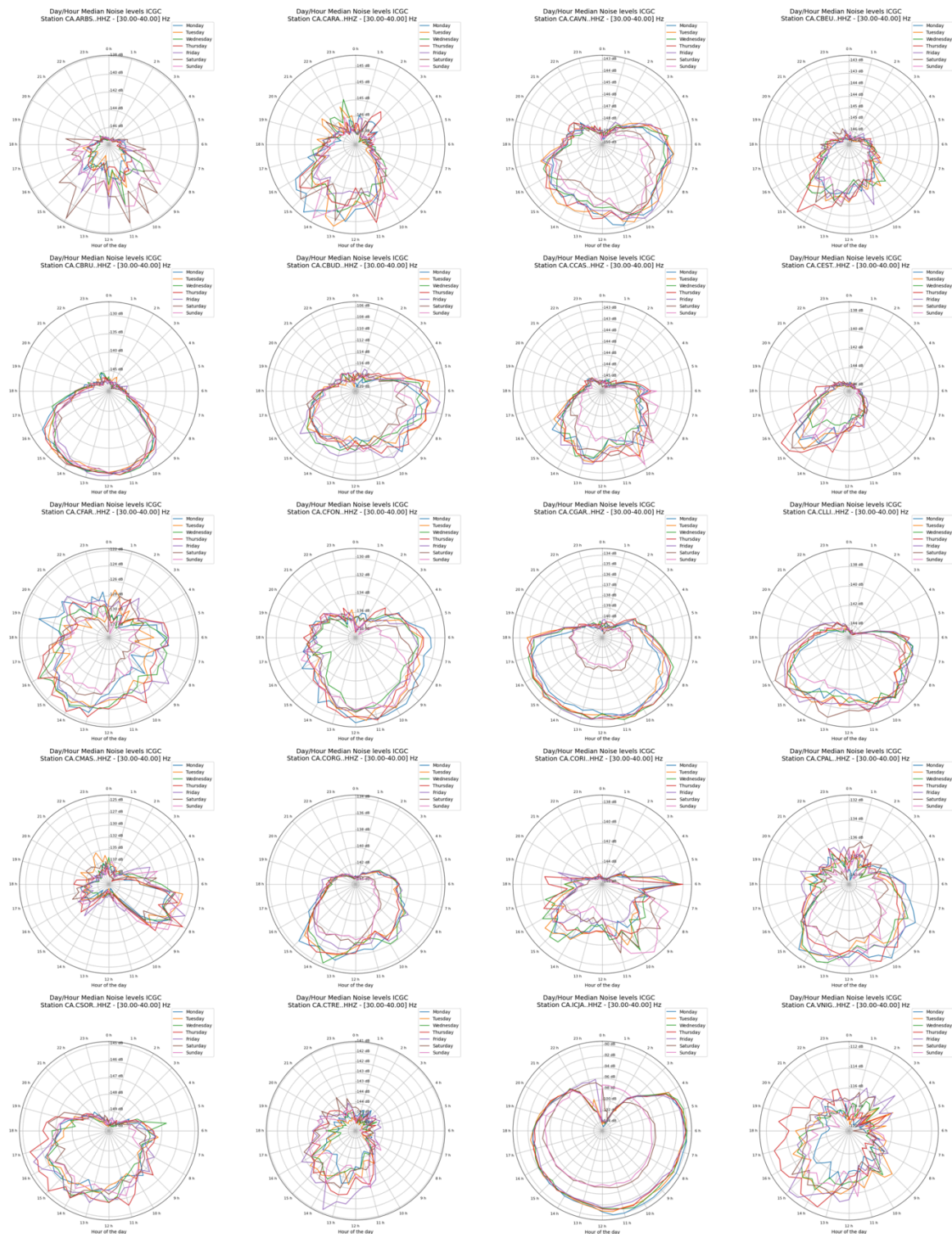
## Supplemental Figure 22

Power amplitude for the 20-30 Hz frequency band, represented as a function of the hour of the day and the day of the week. Each line, represented with different colors, shows the mean values for the days of the week (Monday-Sunday)



### Supplemental Figure 23

Power amplitude for the 30-40 Hz frequency band, represented as a function of the hour of the day and the day of the week. Each line, represented with different colors, shows the mean values for the days of the week (Monday-Sunday)





## Supplemental Figure 24

Power amplitude for the 40-47 Hz frequency band, represented as a function of the hour of the day and the day of the week. Each line, represented with different colors, shows the mean values for the days of the week (Monday-Sunday)

