







On single-station, six degree-of-freedom observations of local to regional seismicity at the Piñon Flat Observatory in Southern California

Andreas Brotzer *, Heiner Igel ¹, Felix Bernauer ¹, Joachim Wassermann ¹, Robert Mellors ², Frank Vernon ²

¹Department of Earth and Environment Sciences, Ludwig-Maximilians-Universität München, Munich, Germany, ²Institute of Geophysics and Planetary Physics, Scripps Institution of Oceanography, San Diego, USA

Author contributions: *Conceptualization*: A. Brotzer, H. Igel, F. Vernon. *Methodology*: Andreas Brotzer, Felix Bernauer, Joachim Wassermann. *Formal Analysis*: Andreas Brotzer, Felix Bernauer. *Investigation*: Andreas Brotzer. *Resources*: Heiner Igel, Frank Vernon, Robert Mellors. *Writing - original draft*: Andreas Brotzer. *Writing - Review & Editing*: Andreas Brotzer. *Visualization*: Andreas Brotzer. *Supervision*: Heiner Igel.

Supplementary Materials

*Corresponding author: andreas.brotzer@lmu.de

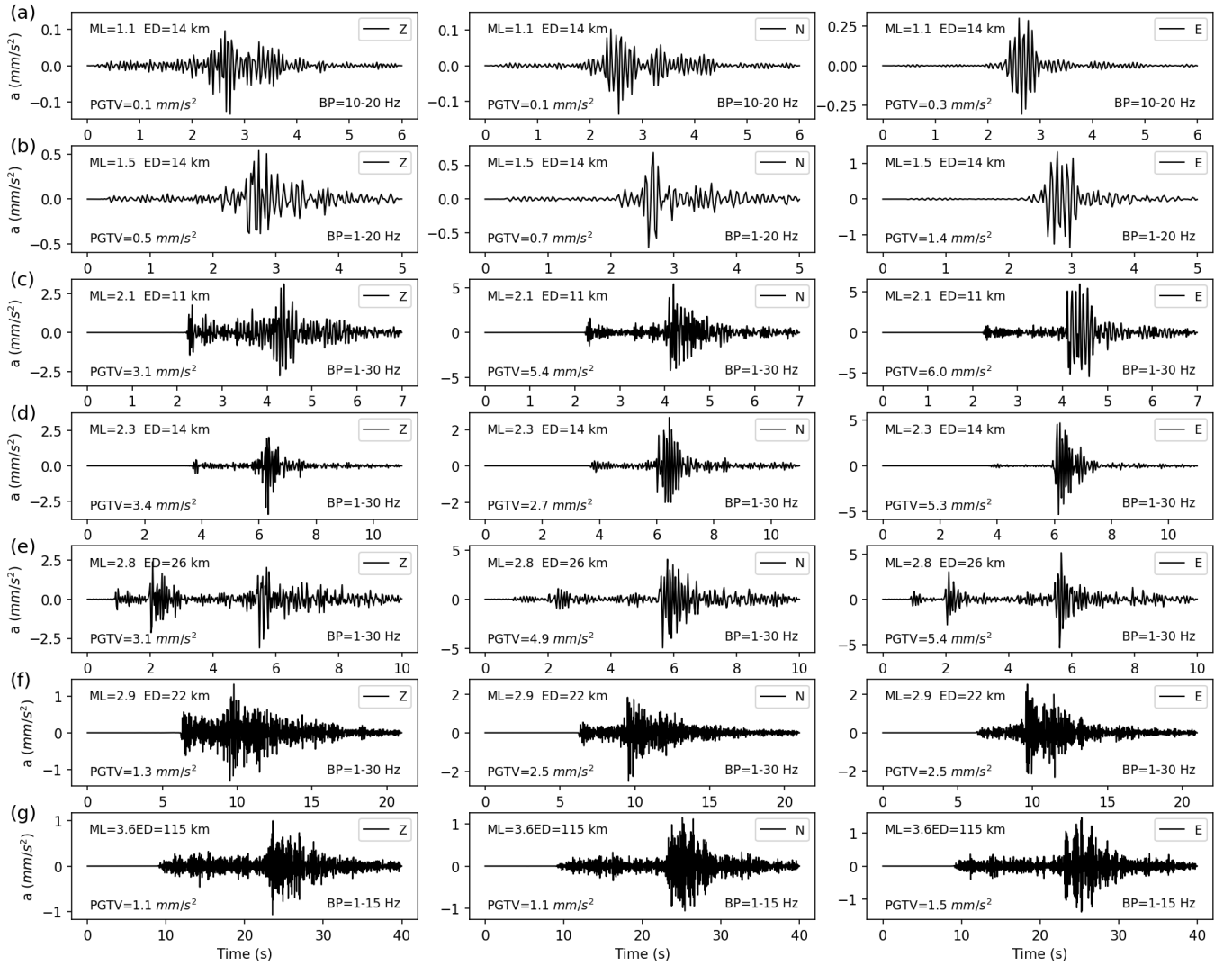


Figure S1 (a) to (g) show a selection of events detected by the co-located broadband seismometer of BSPF across magnitudes ($1.1 < M < 3.6$) and epicentral distances ($11 \text{ km} < ED < 115 \text{ km}$). Each column displays one component of rotational rate observation (Z, N, E from left to right). Peak ground translation velocity (PGTV) and the applied bandpass filter is shown for each record. The origin times are found in Tab. 2. The recording in (e) comprises two events.

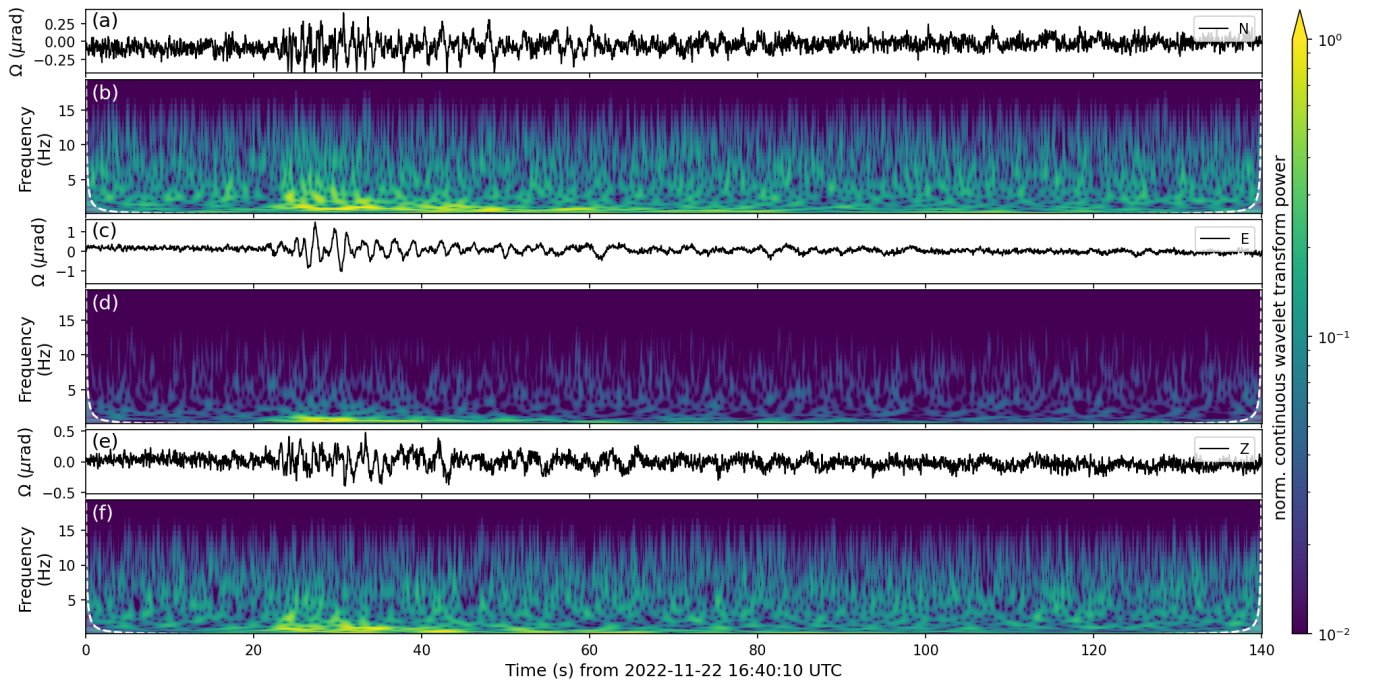


Figure S2 (a), (c) and (e) show rotation rate records of the M_w 6.2 event (2022-11-22 16:39:05 UTC) for north, east and vertical component, respectively, while (b), (d) and (f) show corresponding spectrograms based on the continuous wavelet transform.